

DC POWER TRANSDUCER WTT-83A-DC

Use

Energy-saving and saving of labor can be realized recently by adopting inverter control in such as crane, elevator, machine tools, textile machinery. Inverter is electronic equipment based upon semiconductor. However duration of these parts is not limitless. This product can measure DC power in order to prevent operation failure of inverter/any accident. Also this product can be used for DC heater/DC motor and various battery systems.

Features

1. High quality/high reliability.
2. Measurement of distorted waveform is possible.
3. With output limiter circuit (approx. 1.5 times of rated output) .
4. Constant voltage/current output.
5. With output line surge protection (2, 000A, 8/20 μ s, positive/negative polarity), can transmit an output directly to a distant place.

Specification and performance

Item		Specification
Type		WTT-83A-DC
Tolerance		± 1.0% (% against rated input value)
Input		50kW and other, each type by specification *1: W
Rating	Voltage	DC100V and other, each type by specification *2: X
	Current	DC500A/60mV and other, each type by specification *3: Y
Output (load resistance)		DC5V ( 1k ), DC4-20mA ( 500 ) Each type by specification. However, voltage output up to DC10V, current output up to 20mA
Influence of temperature		± 1.0% (up to 23 ± 20 )
Response time		1 sec. (time it takes to fall within ±1% of final steady value)
Output ripple		1% (% against output span)
Auxiliary supply		AC 110V, 220V±15% (50/60Hz) 3.5VA or DC24V, DC48V, DC110V, 4W by specification
Overvoltage Over current	Input	2 times (10 sec.), 1.2 times (continuity) of rated voltage.
	Auxiliary supply	2 times (10 sec.), 1.2 times (continuity) of rated voltage.
Insulation resistance*5		Between input/output terminal, auxiliary supply terminal, outer case (earth) 50M at DC500V
Withstand voltage*5		Between input/output terminal, auxiliary supply terminal, outer case (earth) AC2,000V (50, 60Hz), 1 min.
Impulse withstand voltage		Between electric circuit and outer case (earth) 5kV 1.2/50μs positive/negative polarity 3 times each.
Appearance color		Black (munsell N1.5)
Operating temperature/ humidity range		-10- + 55 , 30-85%RH
Storage temperature range		-40 - + 70
Weight		Approx.800g

\*1 Intrinsic sensitivity range  $W=K (X/Y)$   $K=0.5-1.2$

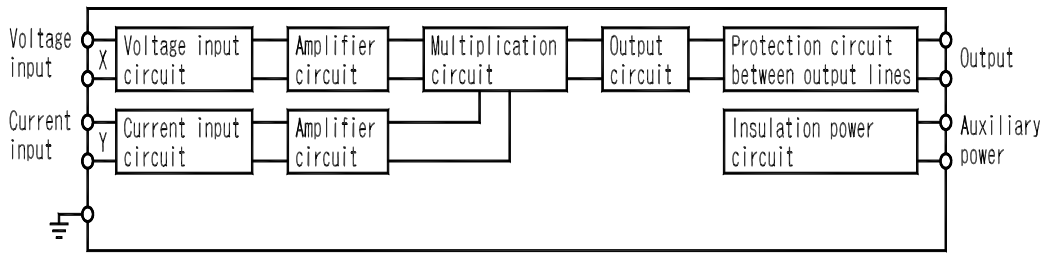
\*2 Input voltage X DC600 (V)

\*3 Input current (shunt voltage) 40mV Y (A)

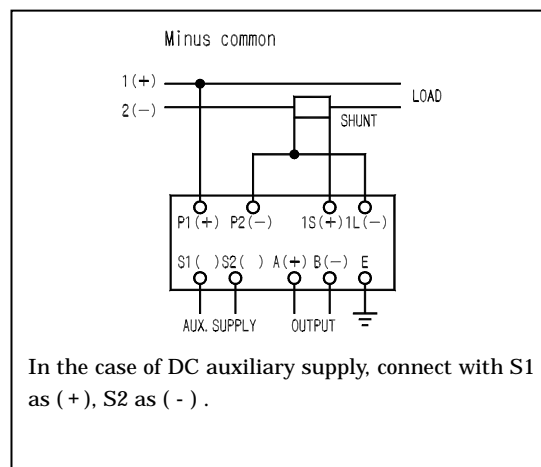
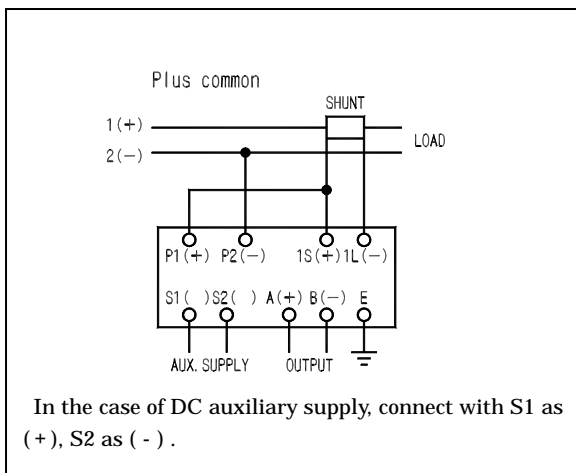
\*4 Power source variation range in the case of DC 110V: 90 to 140V.

\*5 Non-insulation between voltage input terminal/current input terminal/output terminal.

**Block diagram**

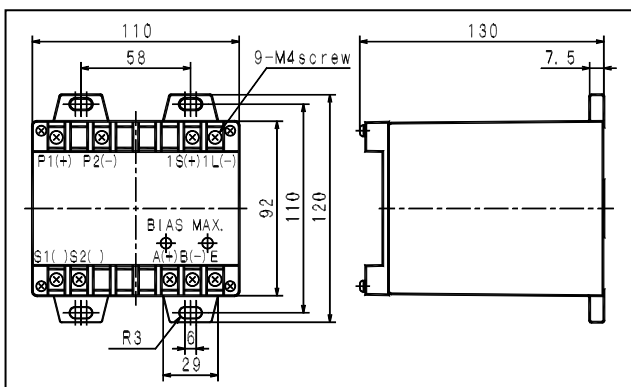


**Connection diagram**



\* Connect according to designated common as voltage/current input terminal is not insulated.

**Dimensions**



**Purchase specifications**

- Type
- Input value (input/voltage/current shunt)
- Output value
- Load resistance
- Auxiliary supply
- Common (plus or minus)
- Quantity